



# Roxtec ComSeal™

Uszczelnienia o klasie szczelności IP 55 z ramą aluminiową.

Roxtec ComSeal™ spełnia wymogi klasy szczelności IP 55. Posiada ramę z malowanego proszku aluminium lub stali nierdzewnej AISI 316. Przepust dostępny jest w sześciu różnych rozmiarach, pozwalających uszczelnić do 32 kabli.



- Odporne na ataki gryzoni
- Odporne na korozję
- Lekkie
- Kompaktowe

## Charakterystyka produktu



IP/UL NEMA

## Struktura podłoża instalacyjnego



Szafy i obudowy

## Sposób montażu



Przykręcanie śrubami

## Klasy i certyfikaty

### Szczelność

- IP 55, UL/NEMA 3,12,12K

## Wymiary ramy

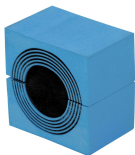
mm/kg

Poniżej przedstawiono tylko kilka przykładowych wariantów ram. Pełna oferta ram i konfiguracji jest dostępna w witrynie [roxtec.com](https://www.roxtec.com).

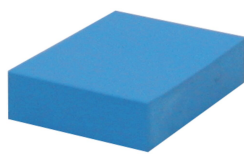
Tytuł	Okna w ramach	Przeźreń uszczelniana	Wymiary zewnętrzne WxHxD	Wymiary otworu w x h	Waga	Nr katalogowy
COMSEAL 10 FRAME ASSEMBLY	1	40 x 100	80.5 x 173 x 55	56(+1/-1) x 149(+1/-1)	0.34	105300

## Dane elementów uszczelniających

### Elementy uszczelniające



Moduł CM z systemem Multidiameter™



Pełny moduł kompensujący CM



Żel montażowy Roxtec

Szczegółowe informacje można znaleźć na [roxtec.com](https://www.roxtec.com).



# Gotowe zestawy przepustów

mm/kg



ComSeal 12/3



ComSeal 10/4



ComSeal 10/7



ComSeal 10/10



ComSeal 12/6



ComSeal 12/9



ComSeal 12/12



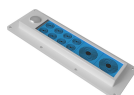
ComSeal 15/3



ComSeal 16/4



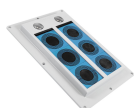
ComSeal 16/7



ComSeal 16/10



ComSeal 16/16



ComSeal 30/6



ComSeal 32/8



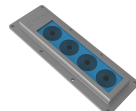
ComSeal 32/14



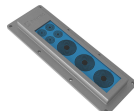
ComSeal 32/20



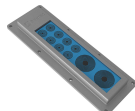
ComSeal 32/32



ComSeal 16/4 AISI316



ComSeal 16/7 AISI316



ComSeal 16/10 AISI316

Tytuł	Konfiguracja	Wymiary zewnętrzne WxHxD	Wymiary otworu w x h	Waga	Nr katalogowy
ComSeal 12/3	3x (9.5-32.5)	88 x 216 x 55	56(+1/-1) x 169(+1/-1)	0.8	105303
ComSeal 10/4	2x (9.5-32.5), 2x (3.5-16.5)	80.5 x 173 x 55	56(+1/-1) x 149(+1/-1)	0.6	105299
ComSeal 10/7	6x (3.5-16.5), 1x (9.5-32.5)	80.5 x 173 x 55	56(+1/-1) x 149(+1/-1)	0.6	105301
ComSeal 10/10	10x (3.5-16.5)	80.5 x 173 x 55	56(+1/-1) x 149(+1/-1)	0.6	105302
ComSeal 12/6	2x (9.5-32.5), 4x (3.5-16.5)	88 x 216 x 55	56(+1/-1) x 169(+1/-1)	0.8	105305
ComSeal 12/9	8x (3.5-16.5), 1x (9.5-32.5)	88 x 216 x 55	56(+1/-1) x 169(+1/-1)	0.8	105306
ComSeal 12/12	12x (3.5-16.5)	88 x 216 x 55	56(+1/-1) x 169(+1/-1)	0.8	105307
ComSeal 15/3	3x (28.0-44.0)	90.5 x 223 x 55	61(+1/-1) x 195(+1/-1)	0.9	105308
ComSeal 16/4	4x (9.5-32.5)	80.5 x 233 x 55	56(+1/-1) x 209(+1/-1)	0.8	105310
ComSeal 16/7	3x (9.5-32.5), 4x (3.5-16.5)	80.5 x 233 x 55	56(+1/-1) x 209(+1/-1)	0.8	105312
ComSeal 16/10	2x (9.5-32.5), 8x (3.5-16.5)	80.5 x 233 x 55	56(+1/-1) x 209(+1/-1)	0.8	105313
ComSeal 16/16	16x (3.5-16.5)	80.5 x 233 x 55	56(+1/-1) x 209(+1/-1)	0.8	105314
ComSeal 30/6	6x (28.0-44.0)	155 x 231 x 55	120(+1/-1) x 195(+1/-1)	1.6	105315
ComSeal 32/8	8x (9.5-32.5)	135 x 241 x 55	103(+1/-1) x 209(+1/-1)	1.4	105316
ComSeal 32/14	6x (9.5-32.5), 8x (3.5-16.5)	135 x 241 x 55	103(+1/-1) x 209(+1/-1)	1.4	105320
ComSeal 32/20	4x (9.5-32.5), 16x (3.5-16.5)	135 x 241 x 55	103(+1/-1) x 209(+1/-1)	1.4	105321
ComSeal 32/32	32x (3.5-16.5)	135 x 241 x 55	103(+1/-1) x 209(+1/-1)	1.4	105322
ComSeal 16/4 AISI316	4x (9.5-32.5)	81 x 233 x 33	58.5(+1/-1) x 211(+1/-1)	1.5	105679
ComSeal 16/7 AISI316	3x (9.5-32.5), 4x (3.5-16.5)	81 x 233 x 33	58.5(+1/-1) x 211(+1/-1)	1.5	105680
ComSeal 16/10 AISI316	2x (9.5-32.5), 8x (3.5-16.5)	81 x 233 x 33	58.5(+1/-1) x 211(+1/-1)	1.5	105681

The product information provided by Roxtec does not release the purchaser of the Roxtec system, or part thereof, from the obligation to independently determine the suitability of the products for the intended process, installation and/or use.

Roxtec gives no guarantee for the Roxtec system or any part thereof and assumes no liability for any loss or damage whatsoever, whether direct, indirect, consequential, loss of profit or otherwise, occurred or caused by the Roxtec systems or installations containing components not manufactured by an authorized manufacturer and/or occurred or caused by the use of the Roxtec system in a manner or for an application other than for which the Roxtec system was designed or intended.

Roxtec expressly excludes any implied warranties of merchantability and fitness for a particular purpose and all other express or implied representations and warranties provided by statute or common law. User determines suitability of the Roxtec system for intended use and assumes all risk and liability in connection therewith. In no event shall Roxtec be liable for indirect, consequential, punitive, special, exemplary or incidental damages or losses.

The Roxtec products are offered and sold in accordance with the conditions of the Roxtec General Terms of Sales. The latest version of the Roxtec General Terms of Sales can be downloaded from <https://www.roxtec.com/en/about-us/about-roxtec/general-terms-of-sales/>

We reserve the right to make changes to the product and technical information without further notice. Any errors in print or entry are no claims for indemnity. The content of this publication is the property of Roxtec International AB and is protected by copyright.

This document was generated on: 2024-04-15